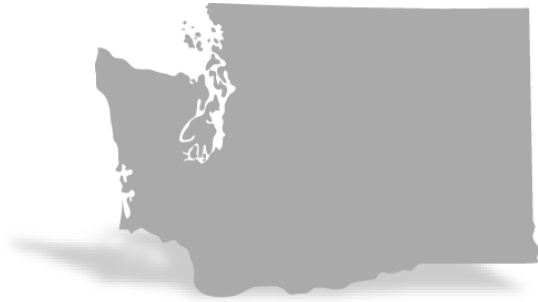


Postsecondary Data Collection Kickoff



Please type your name,
institution, and role into the chat.

Agenda

- Introduction to Postsecondary Data Collection (PSDC) project
- Introduction to ERDC and our work
- Privacy & security
- Proposed timeline
- Roles and responsibilities
- Data workgroup
- Questions
- Next steps

Staff Introductions

Postsecondary Data Collection Project - Background

Guiding Legislation: RCW 28B.92.220

- In 2019, the legislature added [RCW 28B.92.220](#), stipulating that to be eligible for state student financial aid programs, postsecondary institutions shall submit student-level data to the Education Research Data Center (ERDC).
- Data collection is tied to the Washington College Grant
 - Advocating to Legislature on the efficacy of the grant and how funds are spent.
- In this law, the ERDC shall:
 - “determine the appropriate student-level data each postsecondary institution shall report in order to meet the state goals for research and evaluation”
 - “enter data-sharing agreements to facilitate the transfer of required data.”

Similar Data Collection Efforts



National Center for
Education Statistics

What we do ▾

IPEDS Integrated Postsecondary
Education Data System



WASHINGTON STUDENT
ACHIEVEMENT COUNCIL
EDUCATION · OPPORTUNITY · RESULTS

ABOUT US ▾

MEETINGS ▾

STRATEGY & PARTNERSHIPS ▾

[administration](#) » financial aid administration » [unit record report](#)

UNIT RECORD REPORT

Project Update

- Amended initial project data sharing agreements (DSAs) to extend expiration date to March 31, 2026
 - Covers the initial data elements we will be collecting for this work
- ERDC research staff reviewed initial data list and added elements
- Created a project charter and updated timeline
- Met with WSAC and ICW to discuss data and research needs

What Data Do We Need?

- All elements identified in data sharing agreement
- Student information
 - Name, SSN, demographics
 - Major, GPA, financial aid status (WA College Grant, Pell Grant)
- Postsecondary term dates information
- Student major, degree, and credits completion information
- Student type
 - Ex. Dual enrollment student, baccalaureate student, transfer student

What is ERDC?

ERDC was created by the Washington legislature in 2007 to conduct collaborative analyses of early learning, K-12, and higher education programs and education issues across the P-20 system.

We house the state's longitudinal, cross-sector data warehouse, also known as the P20W Warehouse.



What is the “value-add” of ERDC?

Data Contributors give ERDC their data through data sharing agreements



ERDC uses identity matching processes to link students across different data sets and over time.

Education & Workforce Data Contributors



Washington State Department of
CHILDREN, YOUTH & FAMILIES



Washington Office of Superintendent of
PUBLIC INSTRUCTION
OSPI's new brand



**COMMUNITY AND
TECHNICAL COLLEGES**
Washington State Board



Workforce
Training & Education Coordinating
Board



**Employment
Security
Department**
WASHINGTON STATE

Early
learning

K-12

Post-
secondary

Workforce

Education Research and Data Center (ERDC)

**P20W
Warehouse**

ICW
Institutions +
All IHE's that
qualify for
state aid

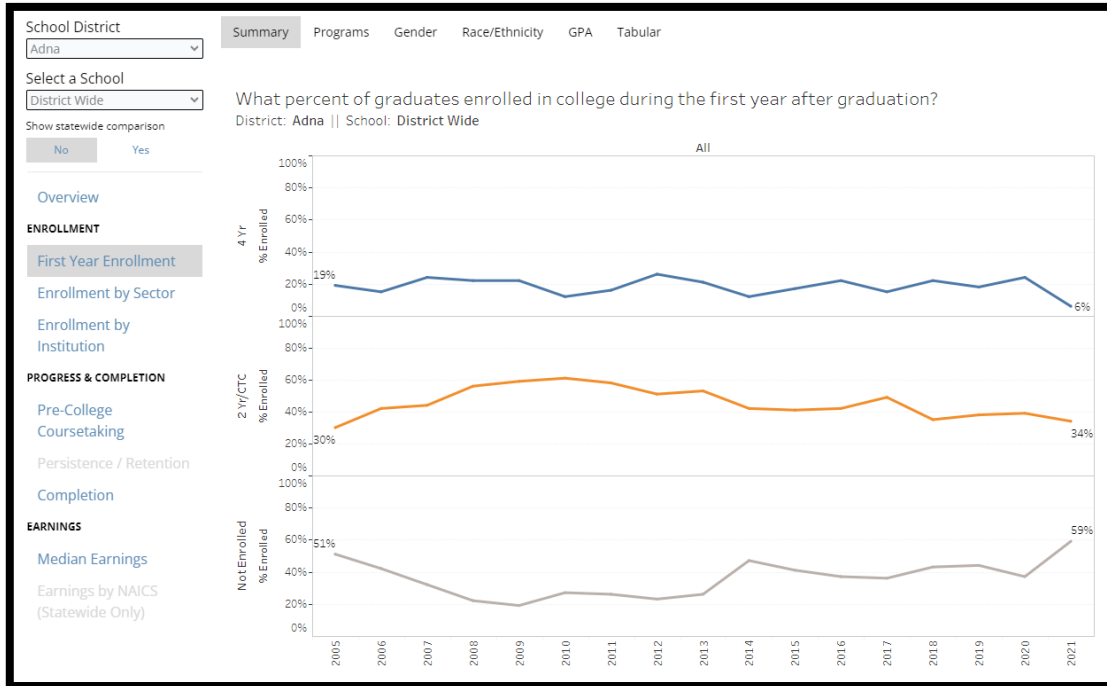


evergreen WWU



Washington State Department of
Labor & Industries

Dashboards



Earnings for Graduates Dashboard

Published: March, 2018 | Updated: November, 2024

Introduction

DASHBOARD

Major

Industry

Institution

Sector

ABOUT

Terms & Definitions

FAQ

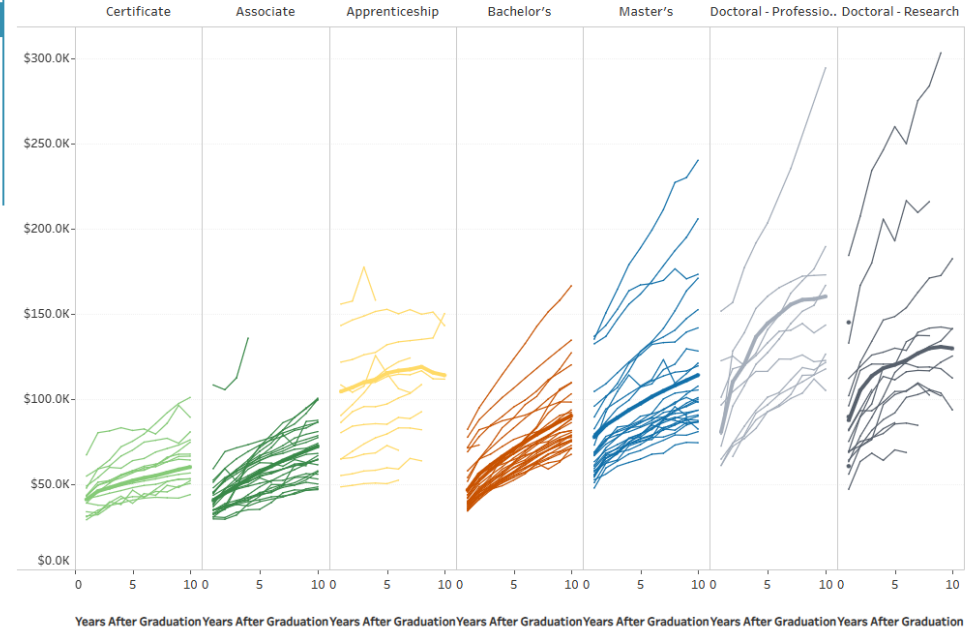
Use Cases

Select an Institution: Statewide

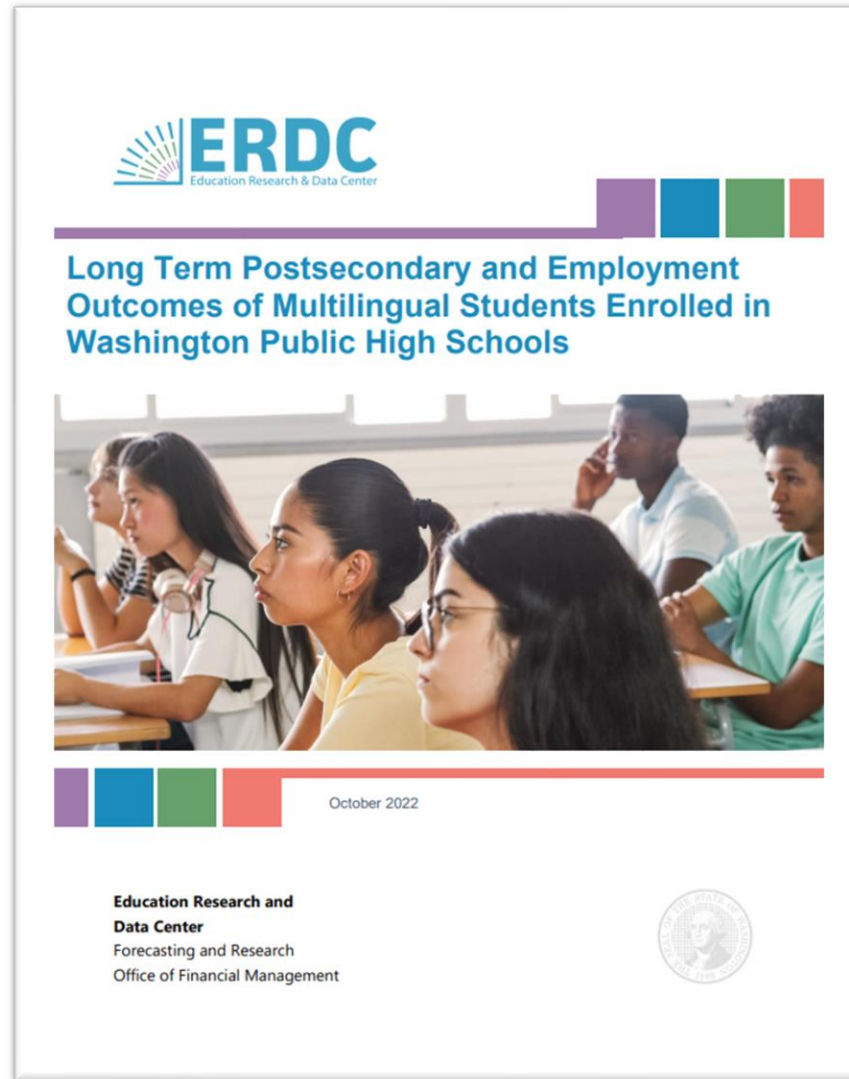
Find a Field of Study: Highlight CIP2 Title

What were the median earnings for graduates in each field of study from Statewide?

Each line represents a field of study. Click on a data point for more information.

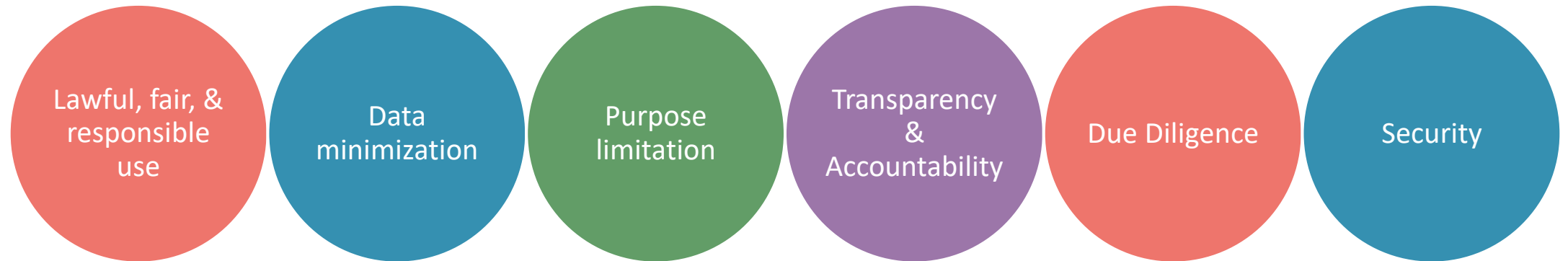


Cross-sector reports

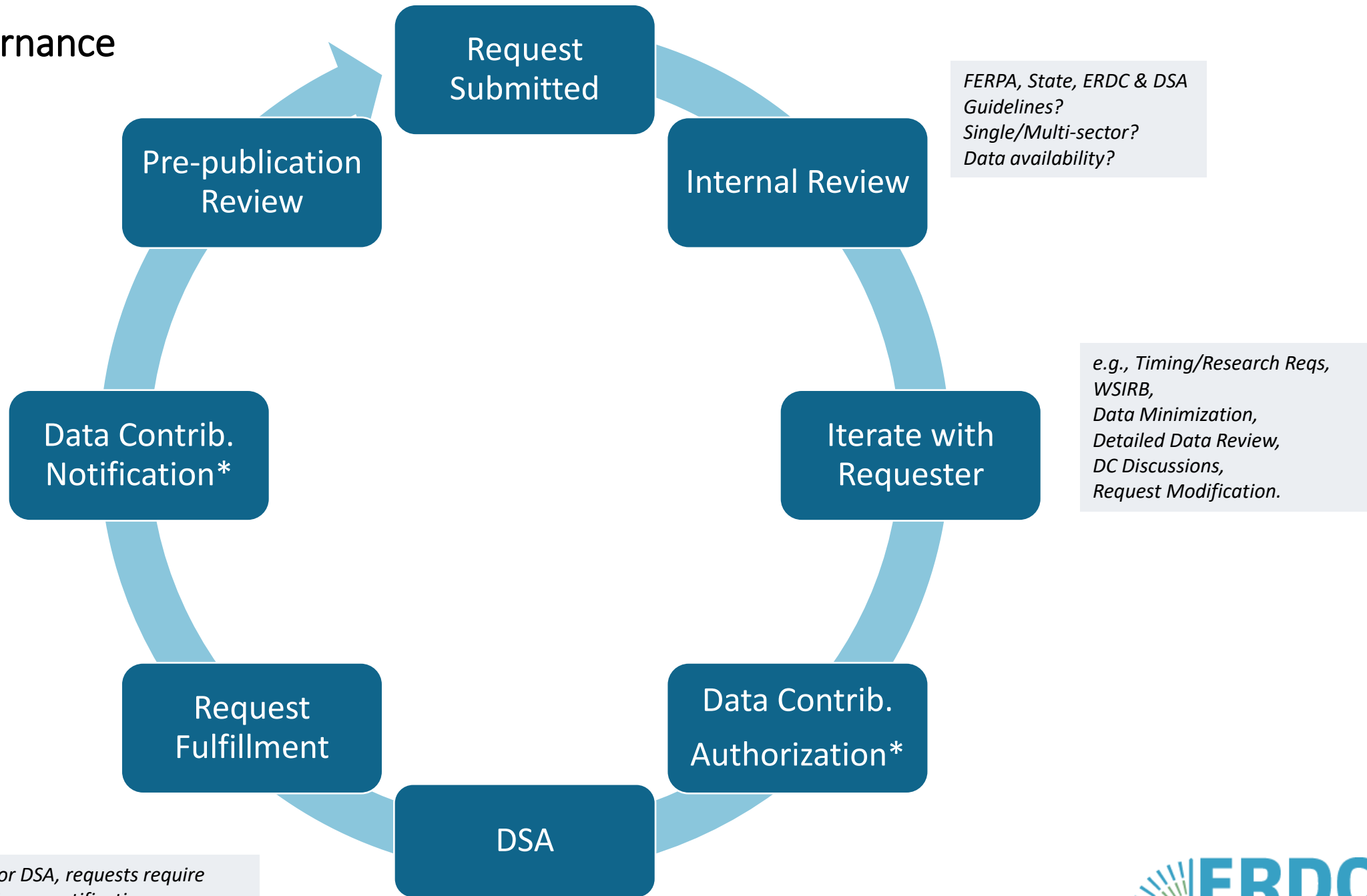


Privacy and Security

ERDC Privacy Principles



ERDC Data Governance Overview



** Depending on Data Contributor DSA, requests require data contributor pre-authorization or notification*

Privacy Governing Principles

- Each piece of data we collect will be tied to a research question or legislative need.
- Data access limited to appropriate personnel
 - Role based access
 - Steward, custodian, identity resolution, researcher/fulfiller
- Classification as Category 3 or Category 4
 - DSA required to share externally
 - Office of Chief Information Officer requirements on security and storage
- ERDC does not re-disclose identifiable data
- Institutions are notified before any redisclosures required by law

Security Governing Principles

- Section 15 in DSA Outlines Information Security Safeguards
 - Encryption in transit and at rest
 - SFT, file servers, databases
 - On-site hardware
 - Utilize appropriate access, authorization, and authentication technology for protecting confidential information.
 - Controls at multiple layers designed to protect the confidentiality, integrity and availability of data
 - Follow change management procedures designed to keep OFM ERDC's systems current on security patches

Proposed Timeline

High Level Timeline

| Season | Focus | Actions / Deliverables |
|------------------------|-----------------------|---|
| Spring 2025 | Project Reset | Planning meeting with ICW Roles and responsibilities document Kickoff/reset meeting with all participating institutions Data workgroup Initial data dictionary Interim DSA with WSAC for URR |
| Summer 2025 | Data analysis | Review test data from initial DSA Data workgroup evaluates additional data elements Compile initial standardized dataset |
| Fall 2025 | Revisions | Use analyses (initial dataset, data workgroup) to guide future data collection Data workgroup agrees upon permissible uses of the data. |
| Winter 2026 and Beyond | Transition to program | Updated DSAs with additional elements, permissible uses Data submission manual and templates Initial research questions Data quality documentation |

Roles and Responsibilities

OFM/ERDC



Collaborate with postsecondary institutions and WSAC to determine appropriate student-level data to collect



Determine state goals for research and evaluation, in collaboration w/ WSAC



Enter into data sharing agreements (DSAs) with institutions to facilitate data transfer



Facilitate data collection



Use data in research and analysis



Share data with permissible use data constraints under established data request processes

Postsecondary Institutions



Submit student-level data to ERDC/OFM



Submit data documentation (such as a data dictionary) to ERDC, so we can understand the data that's been submitted



Collaborate with ERDC/OFM and WSAC to determine appropriate student-level data each postsecondary institution shall report



Participate in data quality and validation efforts



Participate in data governance process for data use

Data Workgroup

Data Needs

- Additional data needs
 - Admissions data
 - Student enrollment data by term
 - Course information
- Research goals
 - Academic progression and course load
 - College access, especially for adult learners
 - Workforce outcomes for different majors
- Requires a new DSA

External Data Workgroup – Seeking Volunteers

- Seeking volunteers for an external data workgroup
- Tasks
 - Review expanded list of data elements, and work with ERDC on scope
 - Discuss the format of data submissions
 - Discuss requesting historical data
 - Work with ERDC on permissible use for expanded elements – leading to new DSA
- Limited time – would meet Spring 2025 through Fall 2025

Next Steps and Questions

Next Steps



**Optional presentations –
after Legislative session**

ERDC data governance
ERDC research



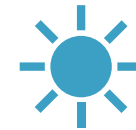
**Presentation on what
and how to submit – end
of April**



**Website with
information, data
dictionary, FAQ**



**Data workgroup to
convene in May**



**First data submission –
Summer 2025**

Questions?

PSDC Inbox

psdc@ofm.wa.gov

ERDC website

[Home | Washington State Education Research and Data Center](#)